



# EDEM TET - Use of an online platform for collaborative dental education

多学科团队合作学习和循证医学为基础制定治疗计划的牙科教育数字校园项目

eCampus for Dental Education supporting multidisciplinary team-based learning and evidence-based treatment planning



Co-funded by the Erasmus+ Programme of the European Union

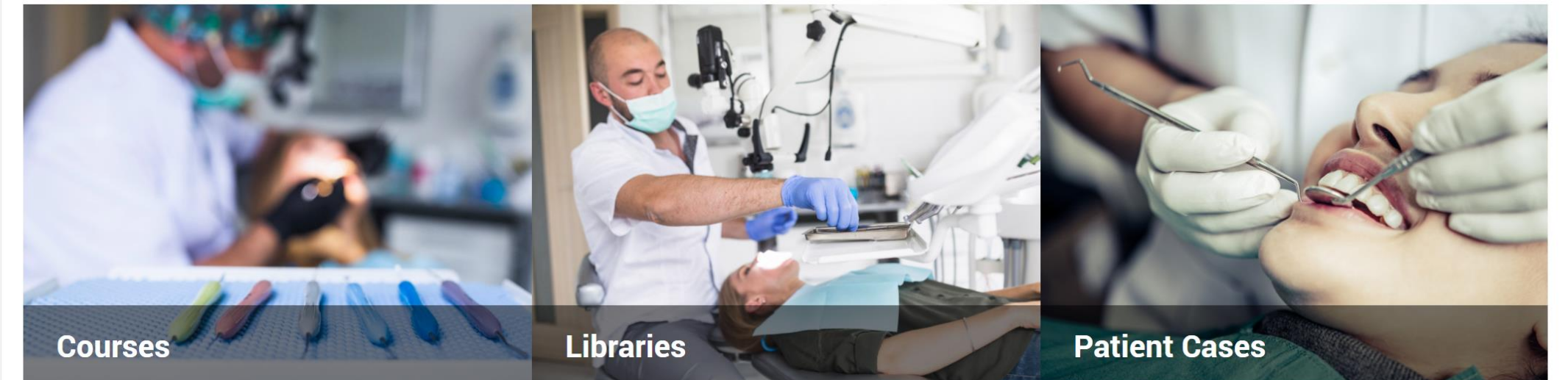
E Campus for Dental Education supporting Multidisciplinary Team-based learning and Evidence-based Treatment planning

## *What?*

- A collection of online **courses and materials** (semi-open) aimed at personalized oral healthcare
- A Moodle platform for dental education supporting team-based and case-based learning, **clinical reasoning** and **evidence-based treatment planning**

EDEMTET Dentalschool <https://dentalschool.edemtet.eu>

Home Settings Participants Reports Question bank More ▾



Search courses

Go ?

- 5 partner universities NJU, WHU, GXMU, QUB, RU
  - Leaders (decisions, management), teachers and students (development), admin
- Support
  - Moodle company *OpenEdu* (develop and manage Moodle platform)
  - Educational designer *Elevate Health* (help develop educational strategy, formats)
- Co-funding:
  - EU Agency *EACEA* The European Education and Culture Executive Agency



Radboud  
University  
Nijmegen



QUEEN'S  
UNIVERSITY  
BELFAST



Co-funded by the  
Erasmus+ Programme  
of the European Union

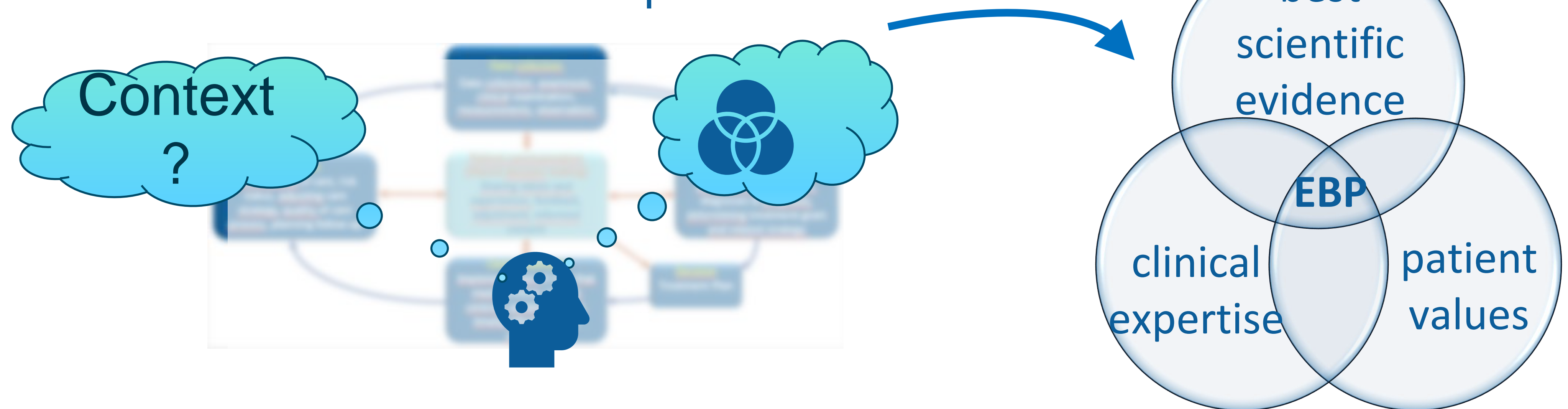
**Personalized healthcare** → clinical reasoning → connecting and integrating perspectives

in EDEMTET:

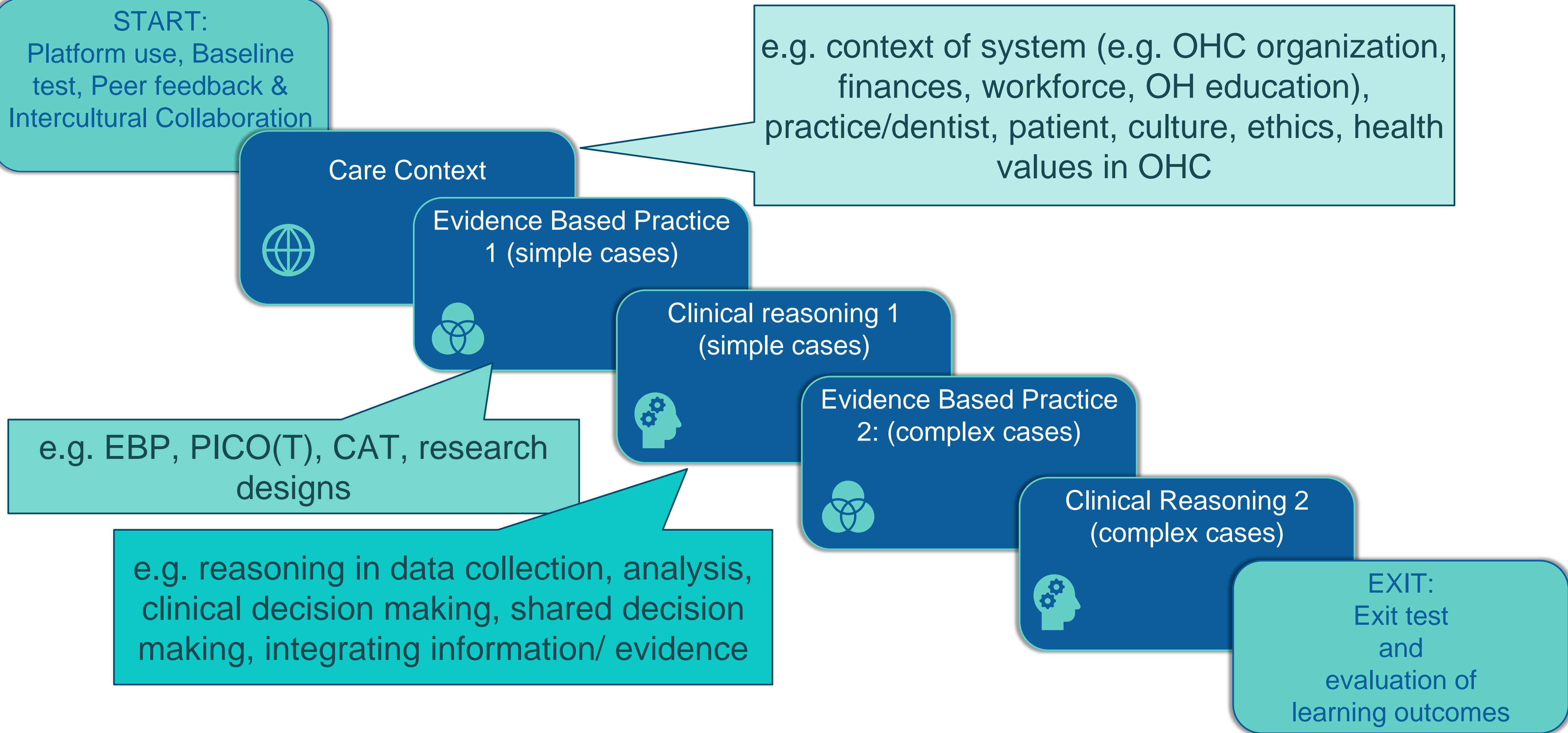
- Compact format, digital
- Learning based on (large variety of) patient cases → case-based
- Activating teaching methods → team-based



- Understanding of **care context** is required to clarify relevant contextual; factors, including patient values, wishes and possibilities
- **Evidence Based Practice** skills are needed for finding, assessing and applying evidence
- **Clinical reasoning** is needed to move through and understand the care delivery cycle; in finding and applying evidence; and in identifying any expertise needed and contextual factors relevant to the care plan

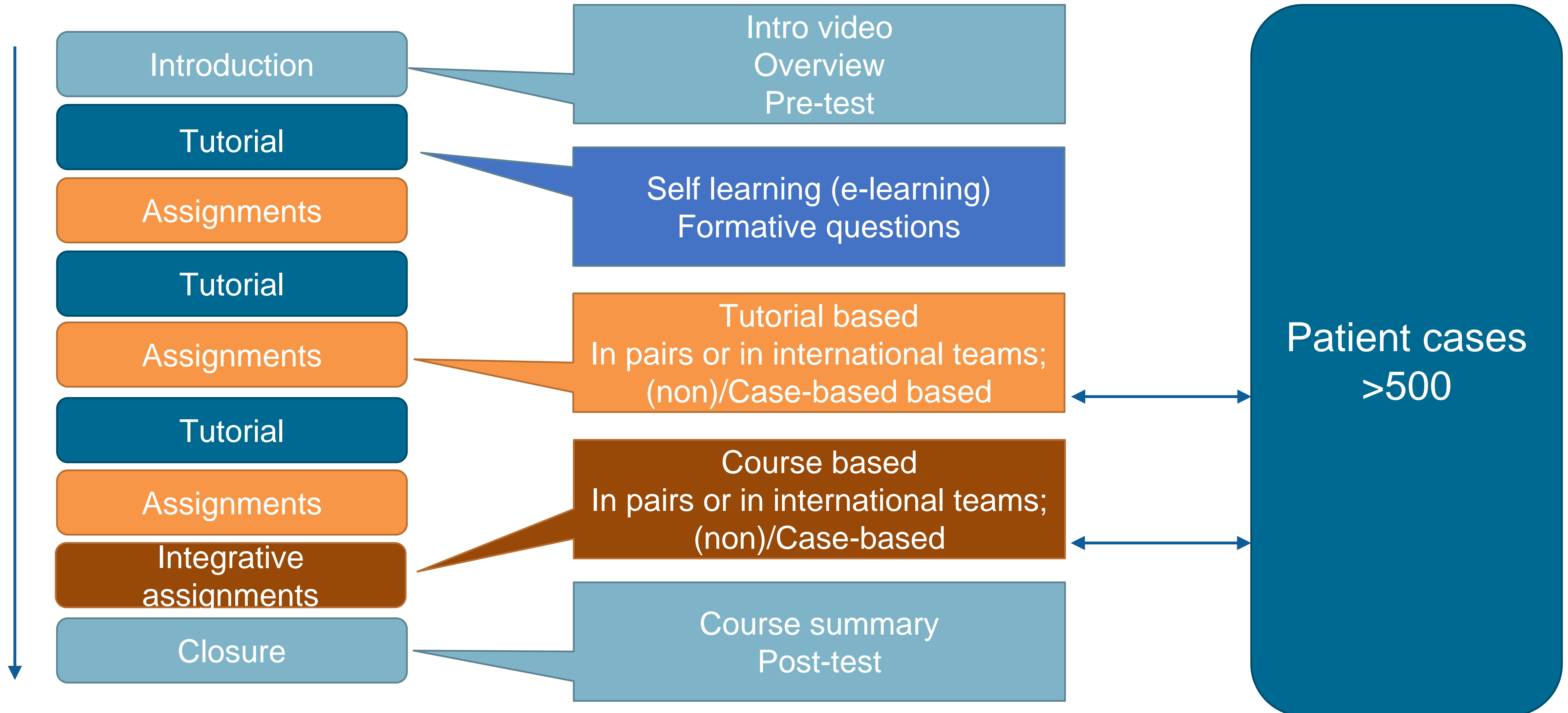


# Courses in EDEMTET



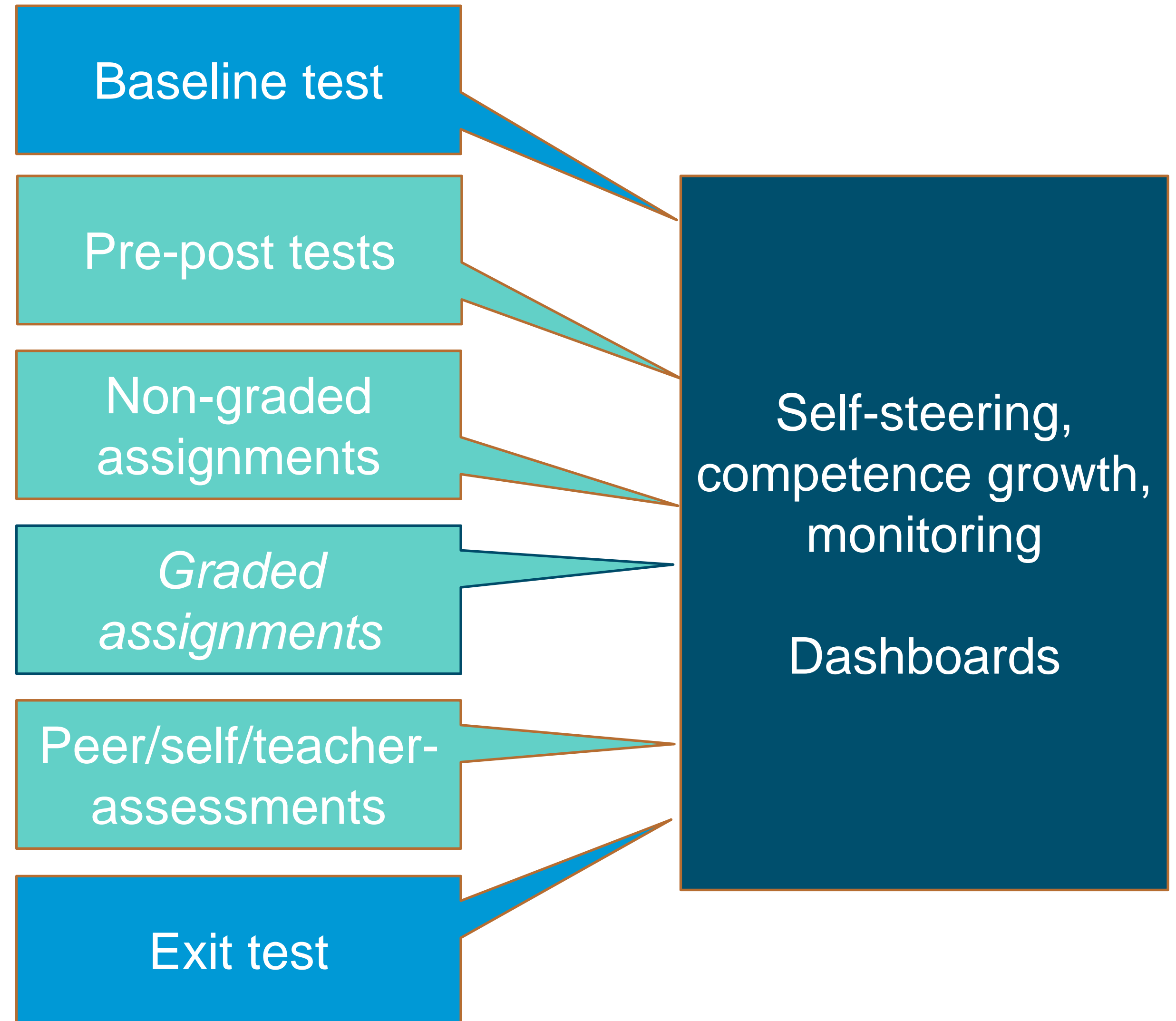
## Learning concepts:

- Case-based learning
- Team-based learning (also in pairs and individually)
- International and intercultural learning
- Self-regulated learning based on formative testing and peer feedback
- Competence-oriented learning based on registration and insight into competence development

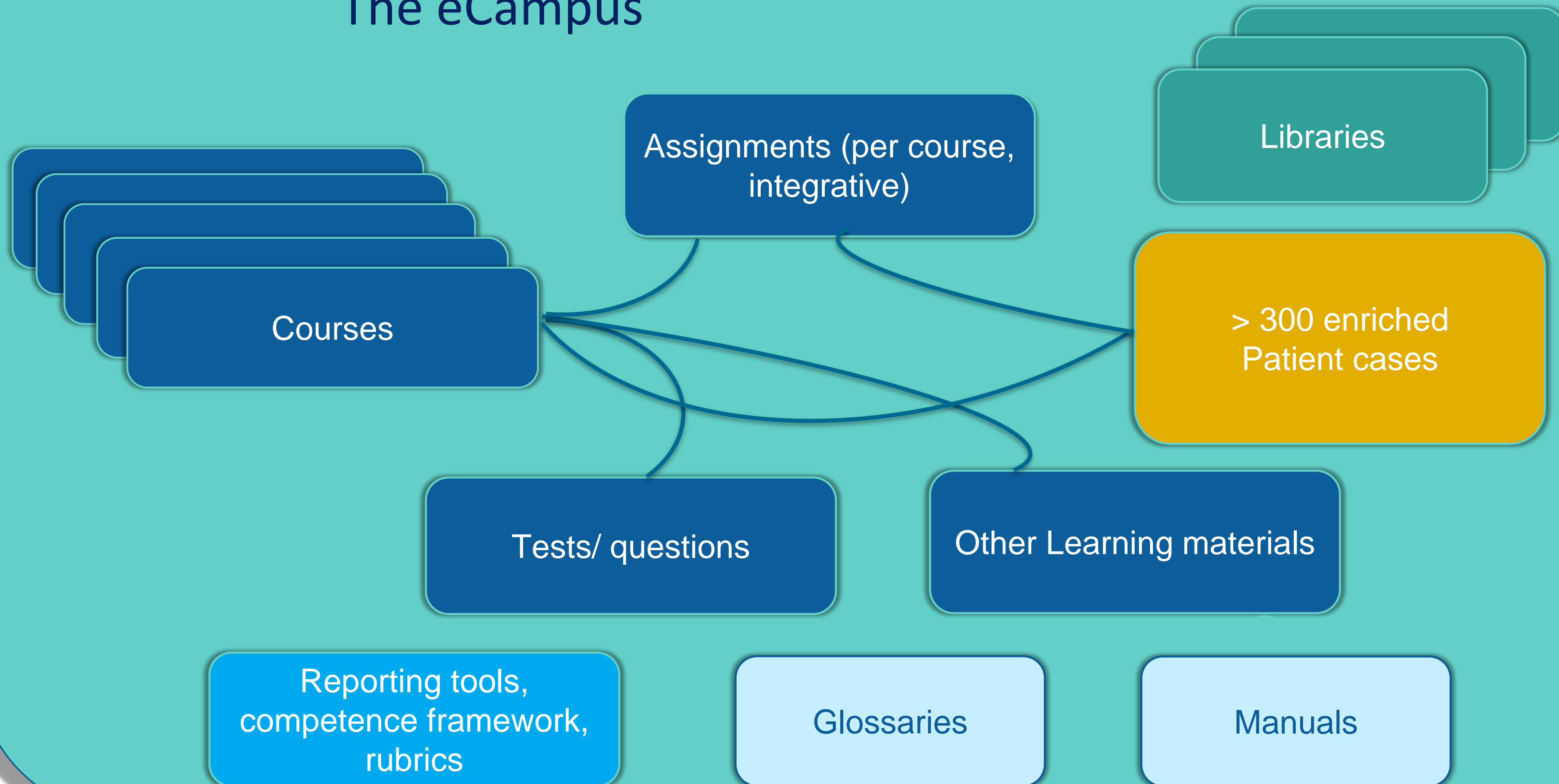




- Variation in testing/assessments, according to competence framework- learning objective – learning activity matrix
- Longitudinal testing
- Multiple data(points): Automated competency growth assessment based on collected test and assessment results
- Via rubrics to dashboards
  
- **Local: “grade” according to own school** based on provided assessment criteria



## The eCampus



- Life long learning
- Flexibilization – *graduate and postgraduate; facilitate 'shopping' student*
- Digitalization
- Re-use of educational resources
- Working with entrusted professional areas (EPA's)
- Case-based & team-based learning



- **Quality of treatment planning & clinical reasoning improves**, becomes more effective and more uniform
- Improves **cohesion in curriculum components** (connects)
- **More effective use of teachers** and working with peer teaching
- Facilitates **intercultural exchange** (student exchange); **internationalisering@home**, further development
- Extensive patient-case database for **enrichment of own educational material**
- Facilitates development of **learning programs and/or tailor-made materials**; e.g. MOOC, postgraduate courses



- Universities can participate from June 2024
- Different scenarios for participation (e.g. all items, libraries, database, courses)
- Joined further development possible



## Questions, Suggestions?

Visit: [www.edemtet.eu](http://www.edemtet.eu); email: [edemtet.thk@radboudumc.nl](mailto:edemtet.thk@radboudumc.nl)

Or contact: [dominique.niستن@radboudumc.nl](mailto:dominique.niستن@radboudumc.nl), Project coordinator